

# S-DRIVE

# DIMENSIONS

## FOCS engines with S-Drive transmission

The Lombardini Marine S-Drive transmission (10÷40 cv) and S-Drive M transmission (40÷80 cv) have been developed from our experience gained from years of sailboat racing. This experience in collaboration with many professional skippers helped us to devise transmissions featuring the essential requirements of sturdiness and reliability whilst, at the same time, offering the minimum water resistance during sailing.

Helical gears reduction ratio  $R=2.18:1$  (for S-Drive - FOCS engines) and  $R=1.8:1$  (for S-Drive - CHD engines).

Folding blades or fixed blades propellers are available on request:

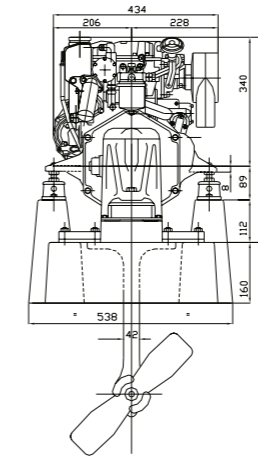
- S-Drive FOCS engines:

propeller direction of rotation LH or RH

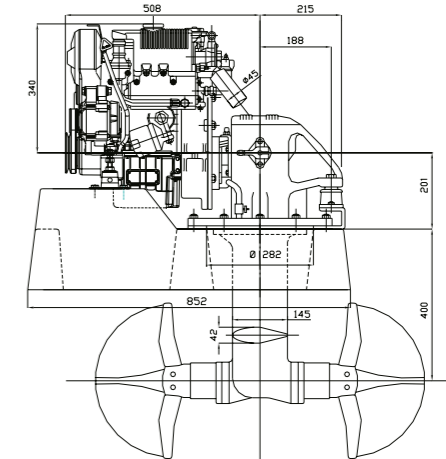
- S-Drive CHD engines: propeller direction of rotation LH



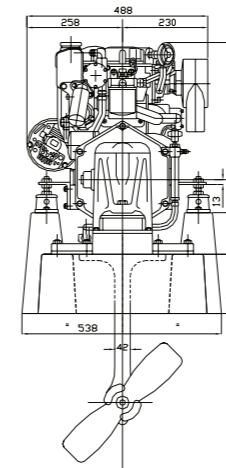
*Transmission S-Drive*



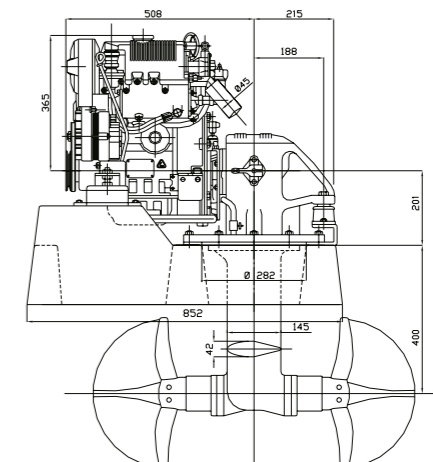
KDW 502 SD



KDW 502 SD



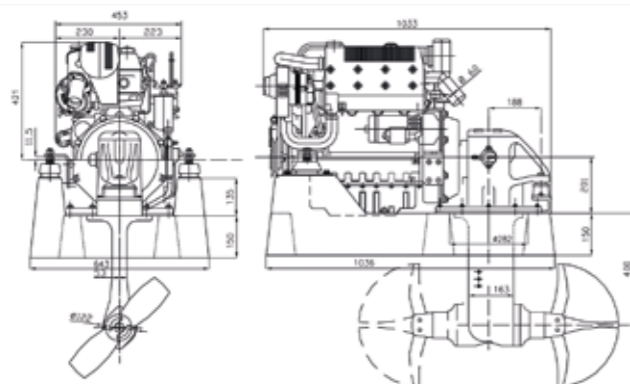
KDW 702 SD - 1003 SD - 1404 SD



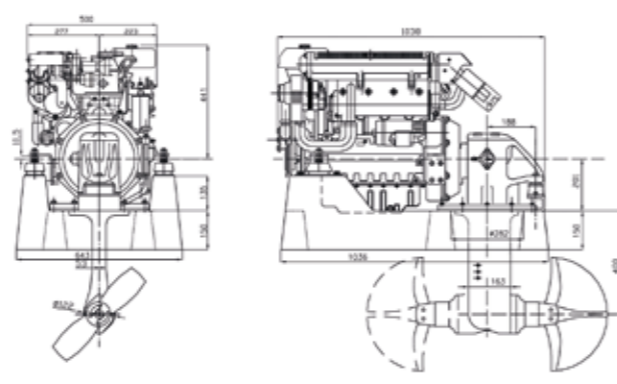
KDW 702 SD

## DIMENSIONS

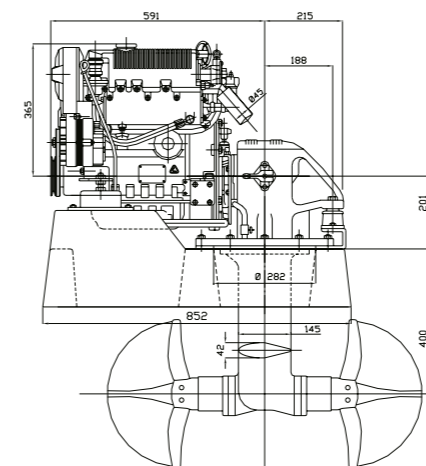
## CHD ENGINES WITH S-DRIVE M TRANSMISSION



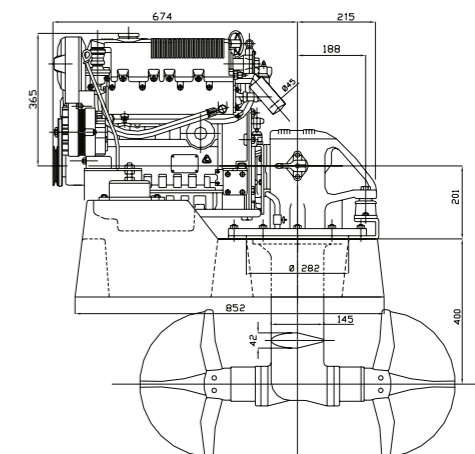
KDW 2204 SD



KDW 2204 TSD



KDW 1003 SD



KDW 1404 SD